

How to identify a panel



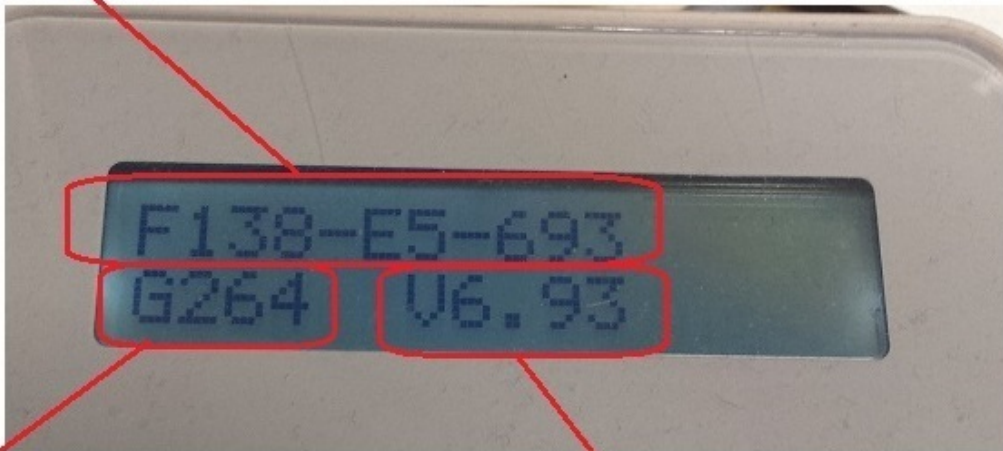
This FAQ details how to identify a panel

There are 2 simple ways of identifying a panel.

I. Go to option 23 (system) and if any groups show up in the LCD display press the * key. The following information will appear:

1. The F number is the identification number of the panel. It details panel code type, what region the firmware is for and the firmware version of the panel.
2. The panel type indicates what type of panel it is and what size. This, for instance, is a Galaxy Dimension 264 v6.93
3. The current firmware version.

1.F NUMBER

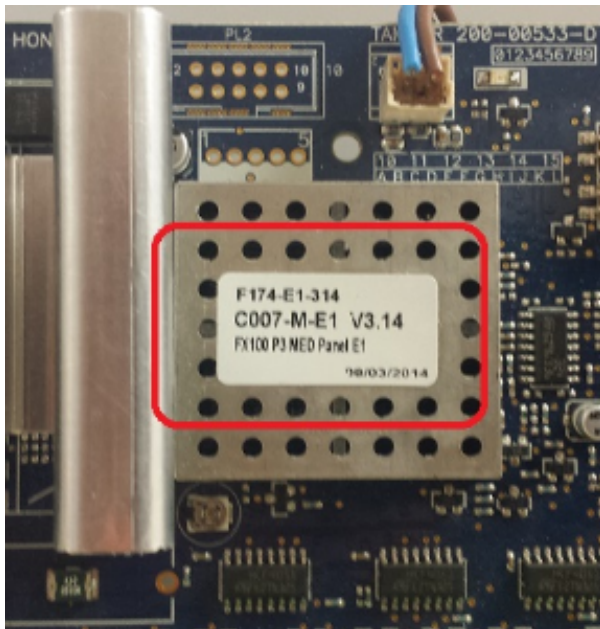


2.PANEL TYPE

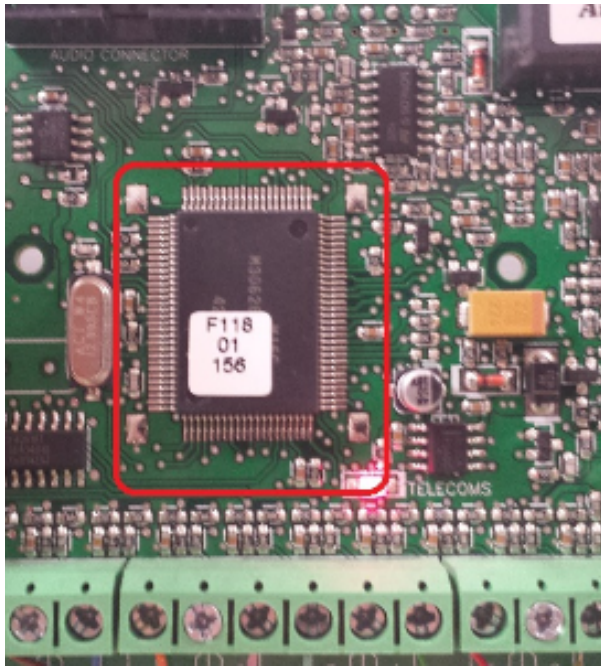
3.FIRMWARE VERSION

II. The second way of identifying the panel type is by a sticker that is placed on the main chip in the PCB. Do note that these stickers can be removed or covered.

Sticker on a Flex panel:



Sticker on a Galaxy 2:



The F numbers can be used to identify the panel as per the table below:

F number	Panel type
F118	Galaxy 2 Series (G2-12/20/44+)
F119	Galaxy 3 -144C
F120	Galaxy 3-144
F121	Galaxy 3 - 520C
F122	Galaxy 3 - 520
F128	Galaxy 3 - 48C
F136	Galaxy Dimension 48
F137	Galaxy Dimension 96
F138	Galaxy Dimension 264 or 520
F174	Galaxy Flex 100
F182	Galaxy Flex 50
F183	Galaxy Flex 20
F195	Galaxy Flex+ 20
F196	Galaxy Flex+ 50
F197	Galaxy Flex+ 100

- The C means that the Galaxy 3 panel has an internal communicator (internal dialer).



If all else fails take a picture of the panel PCB and mail it to tech support!

Revision: 1.0 Date: 21-10-2016